



PROFESSIONAL DISHWASHERS
SERIES EASYLINE



PERFORMING EXCELLENCE

Offering the best performance for modern catering:
Smeg Foodservice is the Smeg division dedicated to the
needs of industry professionals.

Great technological expertise in product design and
manufacturing allows the creation of innovative solutions
that ensure maximum comfort at the workplace and
excellent results.



PROFESSIONAL DISHWASHERS

The new range of professional dishwashers is a natural evolution of over 40 years of experience in the designing and manufacturing of dishwashers. This product family, which is completely developed and manufactured in our Italian factory, is precisely tailored to the needs of the companies in the food service and catering market.

With the combination of aesthetic design and functionality, the commercial dishwasher with its patented rinsing system enables a reduction in water and energy consumption, excellent washing results as well as compliance with the highest hygienic standards.



PROFESSIONAL WASHING

EASYLINE series

The EASYLINE series is completely developed and manufactured in our Italian factory for the requirements of the food service and catering markets. A patented rinsing system ensures optimal washing results. With the combination of aesthetic design and functionality, the SMEG commercial dishwasher enables a reduction in water and energy consumption, excellent washing results as well as compliance with the highest hygienic standards.

THE RANGE

The range is composed by glasswasher basket 400x400 mm, dishwasher basket 500x500 mm and hood type basket 500x500 mm and 600x500 mm.



HOOD-TYPE DISHWASHER Basket 500x500 and 600x500 mm

The hood with 500x500 mm basket thanks to the wide clearance of 440 mm can also wash larger crockery and kitchen tools.

HTY510DW1 / HTY610D1 Series



Triple filter



Drain pump

HTY511DW1 / HTY611D1 Series



Triple filter



Drain pump



HTR System

DISHWASHER - Basket 500x500 mm

Dishwashers with 500x500 mm basket combine a large loading capacity with the flexibility of washing programmes to reply to all the needs of modern catering.

UD510D1 / FD510D1 Series



Triple filter



Drain pump

UD511D1 / FD511D1 Series



Triple filter



Drain pump



HTR System



GLASSWASHER - Basket 400x400 mm

Glasswashers with 400x400 mm basket are available in 710 mm high version and offer a useful clearance of 310 mm, suitable for higher stem glasses as well.

UG410D1 Series



Triple filter



Drain pump

UG411D1 Series



Triple filter



Drain pump



HTR System



VERSIONS

They all come with an **electronic** intuitive interface, with **soft touch buttons** for an easy utilization and short times for new staff training. Versions with continuous regeneration softener or HTR rinse system are available as well.

ELECTRONIC CONTROL PANEL

The new control panel displays the main information on the machine status such as selected wash cycle, temperatures and diagnosis.

The new START button immediately displays the machine status by changing the colour:

GREEN - machine ready for operation

BLUE - the machine is performing a washing cycle

RED - the machine reporting a malfunction



GUARANTEED HYGIENE

The design of the washing cavity, the moulded tank and the innovative selective filtering system achieve top washing performance and guarantee of hygiene for crockery.



EASY TO CLEAN

The thorough design of the surfaces, the **deep-drawn tank with its rounded corners** and the **deep-drawn basket rails** prevent dirt accumulations and ease the cleaning of the machine.

The **inclined bottom of the washing space** ensures that any residues are led to the selective filter and the drain.

The cleaning of the machine at the end of a working day is considerably simplified by the self-cleaning program.



FLEXIBILITY

Each model is preset with a **package of programmes** developed to satisfy the needs of the final user. The available wash cycles are optimised as for wash, rinse times and temperatures depending on the different type of crockery.



FILTERING

The innovative, **three-stage selective filter system** placed in the tank in combination with the **partial tank water exchange** ensures clean water quality with every wash cycle.

This filter method reduces dirt residues after each wash and reduces the consumption of chemicals. This ultimately leads to a substantial reduction in the machine operating costs.

TOP WASHING PERFORMANCE

A number of technical and design-specific features, such as the innovative **rinsing system 'HTR' (pressure increase)**, guarantee excellent rinsing performance under all conditions of use.

The considerable usable wash height across all the range ensures a flexible use for all types of wash items.



WASH WITH 'SOFT START' SYSTEM

All EASYLINE models are equipped with an electronic **Soft-start system** to control the washing pump power.

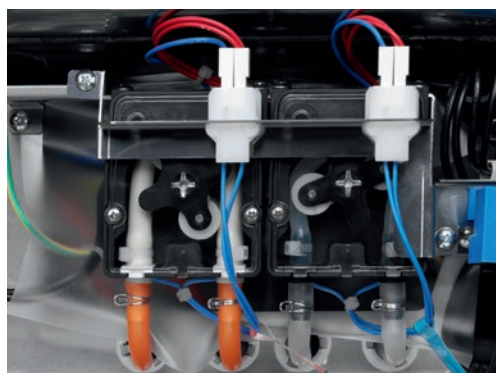
To protect glasses and fragile dishes, the water jet starts with low pressure and only reaches its full strength after the start-up phase.



CONTINUOUS REGENERATION SOFTENER

With the innovative continuous regeneration water softening system, **the softener is regenerated during the cleaning phase** and a machine standstill is avoided. A warning lamp on the control panel indicates when salt must be filled up.

With this innovative system, the correct water quality during the rinsing process and the optimum protection against limescale deposits are always guaranteed.



ELIMINATION OF WASTE

All Smeg dishwashers have detergent and rinse aid peristaltic dosers with electronic control.

Chemicals can be dosed precisely preventing any waste.

Doser adjustment occurs directly from the control panel.



Dedicated wash programmes for different kinds of crockery make Smeg dishwashers versatile and flexible.



WASHING

The powerful and precisely controlled heating of the tank allows the ideal cleaning temperatures to be easily reached and held, so that the efficiency of the detergent is maximised and the washing result is optimised.



'HTR' RINSE SYSTEM

Some models in the EASYLINE range are fitted with the **HTR rinse system** which guarantees water pressure, temperature and quantity control by keeping them constant and independent from the mains. Hence, the rapidity and the result of drying are ensured.

SPECIAL FUNCTIONS

All EASYLINE range models have special functions and design-specific features to increase versatility, guarantee of hygiene and energy saving.

FRESHWATER

For maximum hygiene, the water in the tank is completely replaced by clean water.

EXTRARINSE

A longer rinse guarantees extra results for difficult-to-wash crockery as well.

THERMOSTOP

During each cycle the machine controls if the temperature in the boiler is reached before any rinse operation. A guarantee of hygiene for your crockery.

SELF-CLEANING

At the end of the cycle, the tank drain function washes the washing chamber automatically, preventing any type of manual cleaning.



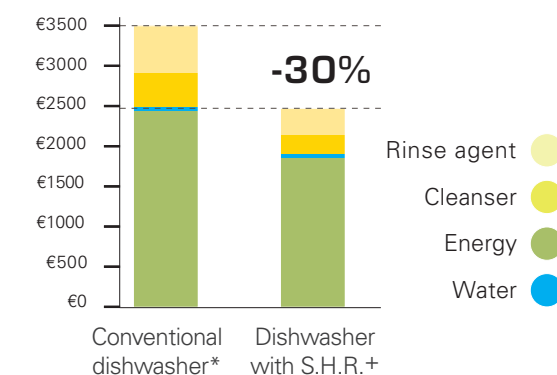
S.H.R.+ SYSTEM - STEAM HEAT RECOVERY

ENERGY EFFICIENCY

Special devices like steam condenser (S.H.R.+) and smart wash system allow a substantial reduction of energy, water and chemicals consumptions.

Even during stand-by time, these models stand out for their low consumption compared to traditional dishwashers.

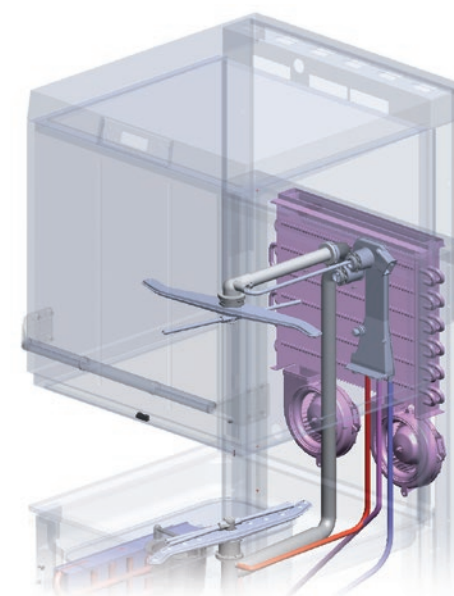
SAVING IN ANNUAL OPERATION COSTS



* Electromechanical, single-walled, without drain and rinsing pump.

SMART TECHNOLOGY

S.H.R.+ System (Steam Heat Recovery or steam elimination) extracts the steam produced in the tank during wash and rinse phases, condenses it and preheats the cold inlet water by using its energy. The results is a 30% saving on energy cost and a more comfortable work environment.



ITALIAN QUALITY

The new range of EASYLINE professional dishwashers is entirely **Made in Italy**, with a high quality and performance standard.

It is designed for bars, restaurants and public facilities thanks to its highly technological wash system.

The EASYLINE range guarantees full hygiene with low power consumption.



ROBUSTNESS AND RELIABILITY

The tank, the wash and rinse arms, as well as the body and the back are **all AISI 304 stainless steel made**, for an even longer life.



OPTIMISATION OF COSTS

The **double-walled, insulated, spring-loaded door** passed stringent fatigue tests to ensure the best resistance. The possibility of the 1/3-opening allows steam to escape after rinsing, so that dishes can dry without a complete opened door to hinder the workway.



LARGE CAPACITY

SMEG know-how, rinsing chamber design and the optimised usable height allows to wash large dishes.



INSULATED BOILER

As sustainability is an important target for Smeg in all areas, a special emphasis is put on saving energy. The simplest way to avoid heat losses is to provide adequate insulation. Therefore the TOPLINE boilers have additional insulation. This saves energy, reduces operating costs and protects the environment.

AUTODIAGNOSTICS

In order to carry out maintenance and service quickly and effectively, SMEG offers the possibility to electronically test components from the control panel.

This helps to easily and quickly detect and fix errors via the autodiagnosis. This reduces machine failures and service costs.

RESPONSIBLE DESIGN

Smeg designs all the professional equipment by addressing an important role to integration of environmental compliance requirements. Much attention is dedicated to the use of materials, including the stainless steel, easily recycled through a careful differentiated collection.

To improve the ecological footprint of the products, Smeg scrupulously observes the Guidelines of the European directives, RoHs and REACH, complying with the minimum values required by the law. Smeg factory has an internal regulation that further extends the restrictions for the use of potentially harmful substances.

RoHS (Restriction of Hazardous Substances). The RoHS Directive prescribes severe restrictions for the use of hazardous materials and substances.

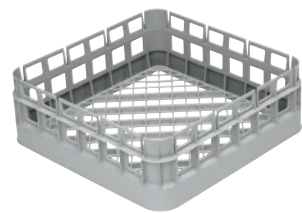
REACH (Registration, Evaluation, Authorization and Restriction of Chemicals). The REACH system is a Directive on the handling of chemicals whose regulation intended to ensure a high level of protection for human health and the environment.

ACCESSORIES

GLASSWASHER - 400x400 mm basket

PB40G01

Universal polypropylene basket, with flat base, dim. 400x400 mm



PHOOS01

Polypropylene basket for cutlery, single



PHOOS02

Polypropylene basket for cutlery, with six compartments



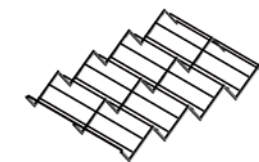
WH00S01

Wire insert for 12 tea dishes



WH00C01

Sloped wire insert for cups



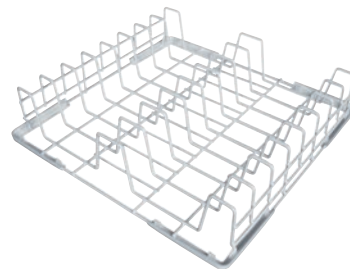
WB40G01

Universal wire basket, with flat base, dim. 400x400 mm



WB40D01

Wire basket for 8 dishes Ø315 mm, dim. 400x400 mm



WB40G02

Wire basket for stem glasses Ø90 mm max., with sloped bottom, dim. 400x400 mm



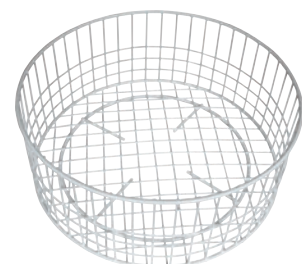
WP01

Support for glasswasher in stainless steel, dim. (LxDxH) 500x500x490 mm



RB40G01

Universal wire basket with flat base, dim. Ø400 mm



RB40A2

Adapter for round basket

KAP06

Pressure increase pump kit, for UG410 series

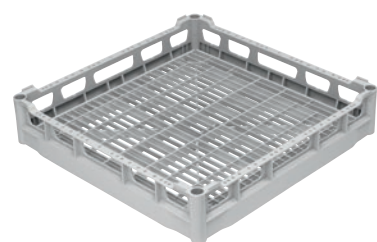
ACCESSORIES

DISHWASHER - Basket 500x500 mm

HOOD-TYPE DISHWASHER Basket 500x500 mm

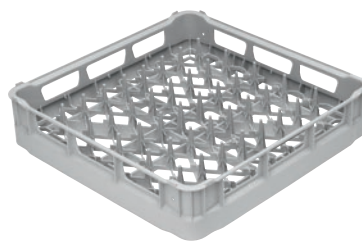
PB50G01

Universal polypropylene basket, with flat base, dim. 500x500 mm



PB50D01

Polypropylene basket for 18 dishes Ø250 mm, dim. 500x500 mm



PHOOS01

Polypropylene basket for cutlery, single



PHOOS02

Polypropylene basket for cutlery, with six compartments



PHOOS03

Polypropylene basket for cutlery, with eight compartments. Suitable to HOOD range



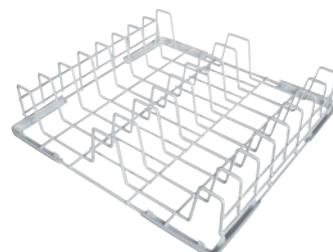
WB50G01

Universal wire basket, with flat base, dim. 500x500 mm



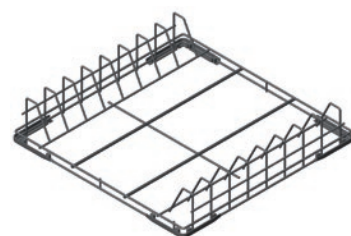
WB50D01

Polypropylene basket for 18 dishes Ø250 mm, and trays, dim. 500x500 mm



WT50T02

Wire basket for 7 GN1/1 containers, depth 20 mm, dim. 500x500 mm



WB50G03

Wire basket for stem glasses Ø72 mm max., with sloped bottom, dim. 500x500 mm



WB50G04

Wire basket for stem glasses Ø135 mm max., with sloped bottom, dim. 500x500 mm



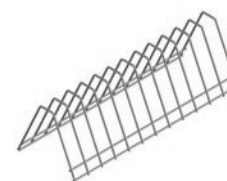
WB50G02

Wire basket for stem glasses Ø90 mm max., with sloped bottom, dim. 500x500 mm



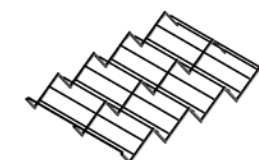
WH00S01

Wire insert for 12 tea dishes



WH00C01

Sloped wire insert for cups.



WP02

Support for dishwasher in stainless steel, dim. (LxDxH) 600x600x500 mm



KAP06

Pressure increase pump kit, for dishwasher and hood

ACCESSORIES

CAPOTE - Cesto 600x500mm

PB50G01

Dim. 500x500mm

PB60G01

Dim. 600x500mm

Universal basket made of polypropylene, with flat bottom.



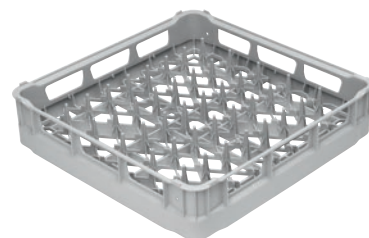
PB50D01 - 18 plates

Dim. 500x500mm

PB60D01 - 22 plates

Dim. 600x500mm

Basket made of polypropylene for plates Ø250 mm



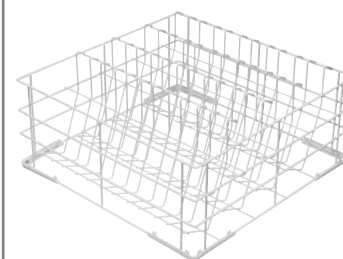
PB60T02

Basket made of polypropylene for tray GN1/1, dim. 600x500 mm



WB50G03

Wire basket for glasses
Ø max. 72 mm, with inclined bottom, dim. 500 x 500 mm



WB50G04

Wire basket for glasses
Ø max. 135 mm, with inclined bottom, dim. 500 x 500 mm



WB50G02

Wire basket for glasses
Ø max. 90 mm, with inclined bottom, dim. 500 x 500 mm



PHOOS02

Cutlery basket made of polypropylene, with 6 compartments



PHOOS03

Cutlery basket made of polypropylene, with 8 compartments, suitable for hood-type models



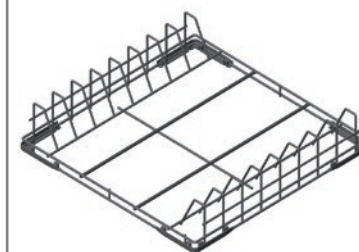
WT50T02

Basket for 7 trays GN1/1 depth 20 mm, dim. 500 x 500 mm



WB60T03

Basket for 5 trays 600x400mm, dim. 600x500mm



WH00S01

Wire insert for 12 plates



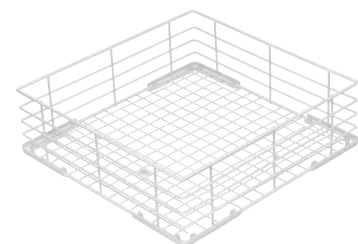
WB50G01

Dim. 500x500mm

WB60G01

Dim. 600x500mm

Universal wire basket, with flat bottom, dim. 500 x 500 mm



WB50D01

Wire basket for 18 plates Ø250mm and self-service trays, dim. 500 x 500 mm

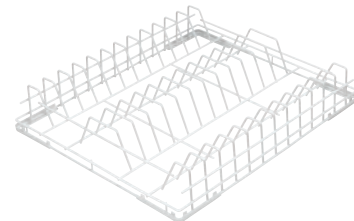


WB60D01

Wire basket for 18 plates Ø260mm dim. 600x500 mm

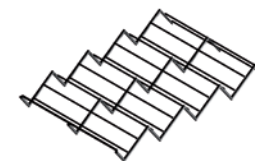
WB60D02

Wire basket for 18 plates Ø320mm dim. 600x500 mm



WH00C01

Sloped wire insert for cups



KITSONLIV

Chemicals level probe



KAP06

Set of pressure boosting pumps, for dishwashers and hood-type dishwashers

ACCESSORIES

HOOD-TYPE DISHWASHERS SERVICE TABLES - Entry tables

WT51200SHR

Right side

Entry table with sink and trash hole, 1200 mm, with backsplash (100 mm) and lower shelf.
Dim. (LxDxH) 1200x720x821.5 mm



Available in the version with left-hand-side attachment

WT51200SHL

WT51200SR

Right side

Entry table with sink, 1200 mm, with backsplash (100 mm) and lower shelf.
Dim. (LxDxH) 1200x720x821.5 mm



Available in the version with left-hand-side attachment

WT51200SL

WT5700SR

Right side

Entry table with sink, 700 mm, with backsplash (100 mm) and lower shelf.
Dim. (LxDxH) 700x720x821.5 mm



Available in the version with left-hand-side attachment

WT5700SL



HOOD-TYPE DISHWASHERS SERVICE TABLES - Exit tables

WTX51200R

Right side

Exit table, 1200 mm, with backsplash (100 mm) and lower shelf.
Dim. (LxDxH) 1200x720x821.5 mm



Available in the version with left-hand-side attachment

WTX51200L

WTX5700R

Right side

Exit table, 700 mm, with backsplash (100 mm) and lower shelf.
Dim. (LxDxH) 700x720x821.5 mm



Available in the version with left-hand-side attachment

WTX5700L

WTX51200

Exit table, 1200 mm to be used on both sides, with lower shelf.
Dim. (LxDxH) 1200x560x821.5 mm



WTX5700

Exit table, 700 mm, with backsplash (100 mm) and lower shelf.
Dim. (LxDxH) 700x720x821.5 mm.



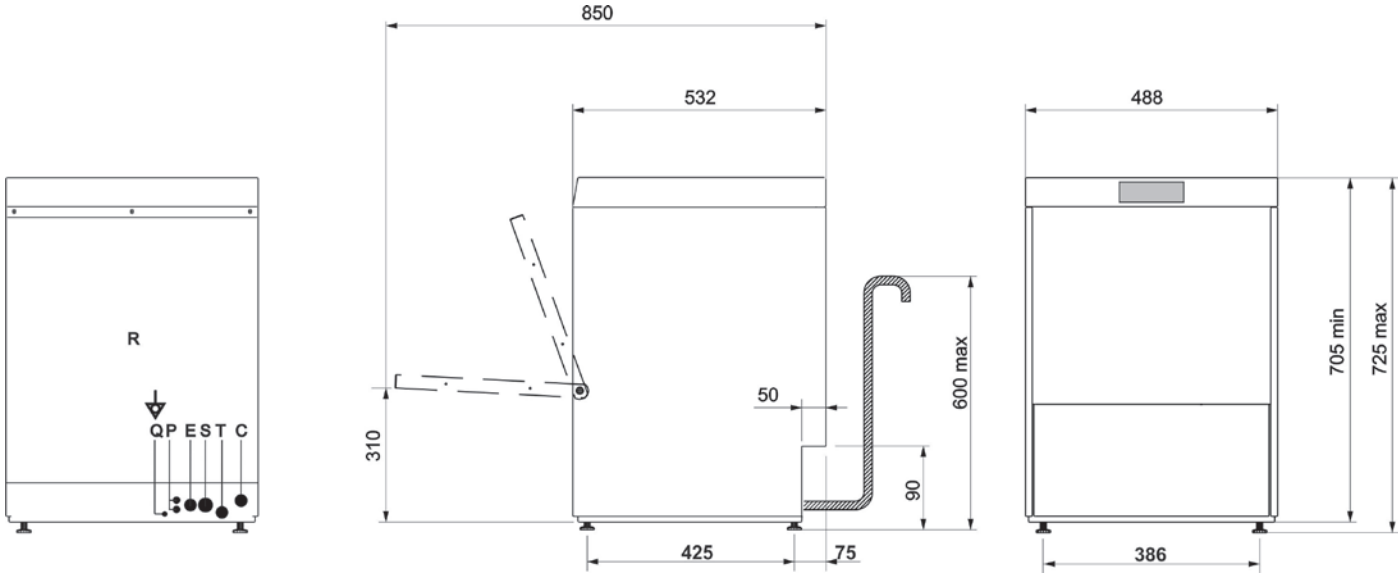
		Glasswasher	
Model		UG411D	UG411DS
Dimensions (L x D x H)	mm	488 x 532 x 705	488 x 532 x 705
Basket	cm	40x40	40x40
Door clearance	mm	300	300
GN1/1 tray wash		no	no
Type of interface		Soft-touch	Soft-touch
Structure		double skinned	double skinned
Supplied water temperature	°C	>15 <60	>15 <60
Tank capacity	litres	7	7
Tank resistance	W	800	800
Filtering system		Triple selective filter	Triple selective filter
Boiler capacity	litres	4	4
Boiler heating element	W	4,500	4,500
Wash pump	W	290	290
Continuous softener		-	YES
Tank temperature	°C	52 ÷ 62	52 ÷ 62
Rinse temperature	°C	71 ÷ 87	71 ÷ 87
Adjustable temperatures		Yes	Yes
Water consumption	litres/cycle	2.3	2.3
Minimum supply pressure	bar	2	2
Drain pump		Yes	Yes
Rinse aid / Detergent doser		Peristaltic / Peristaltic	Peristaltic / Peristaltic
Programme 1	sec	80	80
Programme 2	sec	120	120
Programme 3	sec	160	160
Programme 4	sec	70	70
Programme 5	sec	160	160
Programme 6	sec	-	-
Special programmes		Freshwater	Freshwater
		Self-cleaning	Self-cleaning
Thermostop		Yes	Yes
Total power	W	4800 - 3300 (230 V 1N)	4800 - 3300 (230 V 1N)
Electrical connection	V/ph/Hz	400/3/50 230/3/50 - 230/1N/50	400/3/50 230/3/50 - 230/1N/50
Model without H.T.R. system		UG410D	UG410DS
Model with S.H.R.+ system		-	-
Basket number	dishes	-	-
	universal / glasses	2 x WB40G01	2 x WB40G01
	cutlery	1 x PHOOS01	1 x PHOOS01

Dishwasher		Raised dishwasher	
UD511D	UD511DS	FD511D	FD511DS
600 x 600 x 820	600 x 600 x 820	600 x 600 x 1290	600 x 600 x 1290
50x50	50x50	50x50	50x50
415	415	415	415
Yes	Yes	Yes	Yes
Soft-touch	Soft-touch	Soft-touch	Soft-touch
double skinned	double skinned	double skinned	double skinned
>15 <60	>15 <60	>15 <60	>15 <60
11	11	11	11
2000	2000	2000	2000
Triple selective filter	Triple selective filter	Triple selective filter	Triple selective filter
6	6	6	6
4,500	4,500	4,500	4,500
700	700	700	700
-	YES	-	NO
52 ÷ 62	52 ÷ 62	52 ÷ 62	52 ÷ 62
71 ÷ 87	71 ÷ 87	71 ÷ 87	71 ÷ 87
Yes	Yes	Yes	Yes
3.2	3.2	3.2	3.2
2	2	2	2
Yes	Yes	Yes	Yes
Peristaltic / Peristaltic	Peristaltic / Peristaltic	Peristaltic / Peristaltic	Peristaltic / Peristaltic
80	80	80	80
120	120	120	120
180	180	180	180
130	130	130	130
250	250	250	250
70	70	70	70
Freshwater	Freshwater	Freshwater	Freshwater
Self-cleaning	Self-cleaning	Self-cleaning	Self-cleaning
Yes	Yes	Yes	Yes
6.700 - 3.600 (230V/1N/50)	6.700 - 3.600 (230V/1N/50)	6.700 - 3.600 (230V/1N/50)	6.700 - 3.600 (230V/1N/50)
400/3/50 230/3/50 - 230/1N/50	400/3/50 230/3/50 - 230/1N/50	400/3/50 230/3/50 - 230/1N/50	400/3/50 230/3/50 - 230/1N/50
UD510D	UD510DS	-	-
-	-	-	-
1 x PB50D01	1 x PB50D01	1 x PB50D01	1 x PB50D01
1 x PB50G02	1 x PB50G02	1 x PB50G02	1 x PB50G02
1 x PHOOS02	1 x PHOOS02	1 x PHOOS02	1 x PHOOS02

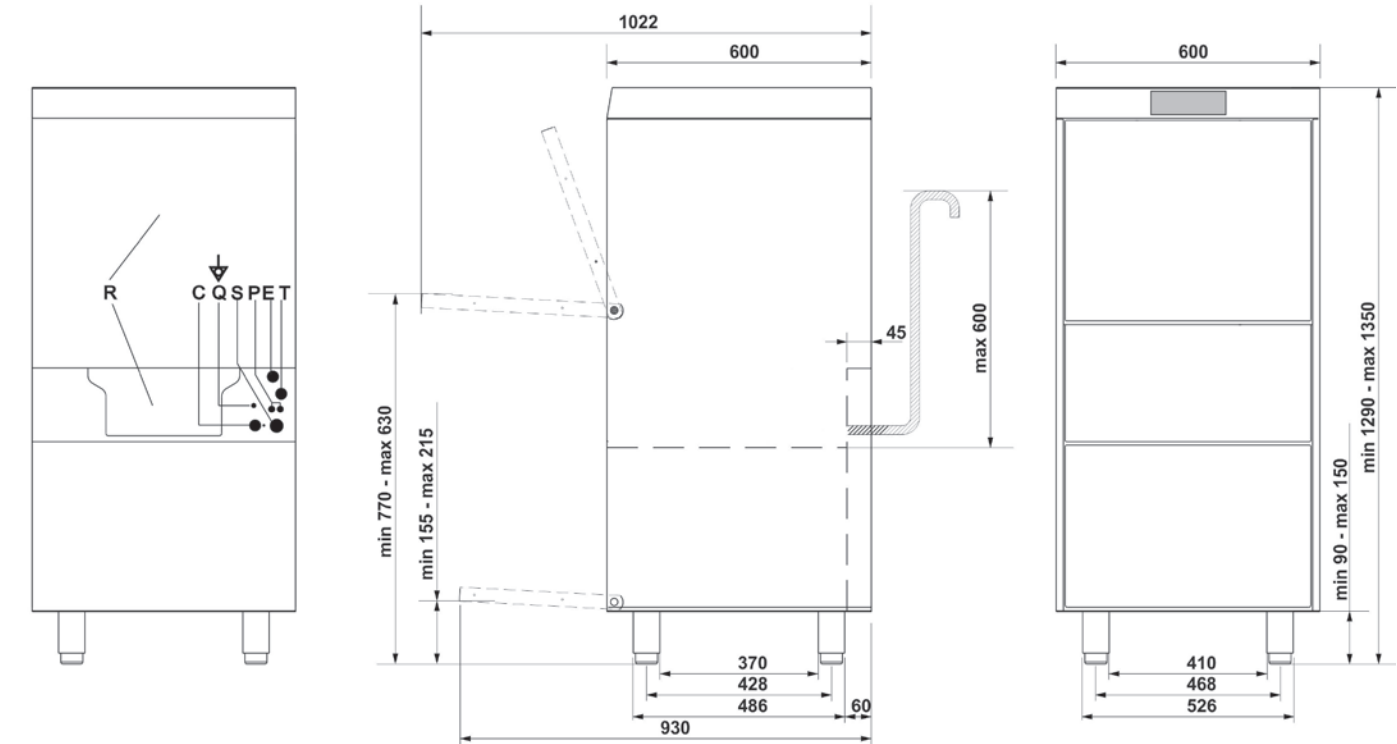
		Hood-type - Basket 500x500 mm	
Model		HTY511DW	HTY511DSW
Dimensions (L x D x H)	mm	620 x 736 x 1530 (2102)	620 x 736 x 1530 (2102)
Basket	cm	50x50	50x50
Door clearance	mm	440	440
GN1/1 tray wash		Yes	Yes
Type of interface		Soft-touch	Soft-touch
Structure		double skinned	double skinned
Supplied water temperature	°C	>15 <60	>15 <60
Tank capacity	litres	17	17
Tank resistance	W	2,200	2,200
Filtering system		Triple selective filter	Triple selective filter
Boiler capacity	litres	8	8
Boiler heating element	W	9,000	9,000
Wash pump	W	700	700
Continuous Softener		-	Yes
Tank temperature	°C	52 ÷ 62	52 ÷ 62
Rinse temperature	°C	71 ÷ 87	71 ÷ 87
Adjustable temperatures		Yes	Yes
Water consumption	litres/cycle	3.2	3.2
Minimum supply pressure	bar	2	2
Drain pump		Yes	Yes
Rinse aid / Detergent doser		Peristaltic / Peristaltic	Peristaltic / Peristaltic
Programme 1	sec	80	80
Programme 2	sec	120	120
Programme 3	sec	180	180
Programme 4	sec	130	130
Programme 5	sec	250	250
Programme 6	sec	70	70
Special programmes		Freshwater	Freshwater
		Self-cleaning	Self-cleaning
Thermostop		Yes	Yes
Total power	W	9,700	9,700
Electrical connection	V/ph/Hz	400/3/50	400/3/50
Model without H.T.R. system		HTY510DW	-
Model with S.H.R.+ system		HTY511DH	HTY511DSH
Basket number	dishes	1 x PB50D01	1 x PB50D01
	universal / glasses	1 x PB50G02	1 x PB50G02
	cutlery	1 x PHOOS02	1 x PHOOS02

		Hood-type - Basket 600x500 mm	
		HTY615D	HTY615DS
		730 x 760 x 1520 (2040)	730 x 760 x 1520 (2040)
		60x50	60x50
		420	420
		Yes	Yes
		Soft-touch	Soft-touch
		double skinned	double skinned
		>15 <60	>15 <60
		25	25
		2,200	2,200
		Triple selective filter	Triple selective filter
		8	8
		9,000	9,000
		1,000	1,000
		-	Yes
		52 ÷ 62	52 ÷ 62
		71 ÷ 87	71 ÷ 87
		Yes	Yes
		3.2	3.2
		2	2
		Yes	Yes
		Peristaltic / Peristaltic	Peristaltic / Peristaltic
		80	80
		120	120
		180	180
		130	130
		250	250
		70	70
		Freshwater	Freshwater
		Self-cleaning	Self-cleaning
		Yes	Yes
		10,000	10,000
		400/3/50	400/3/50
		-	-
		-	-
		1 x PB60D01	1 x PB60D01
		1 x PB60G01	1 x PB60G01
		1 x PHOOS02	1 x PHOOS02

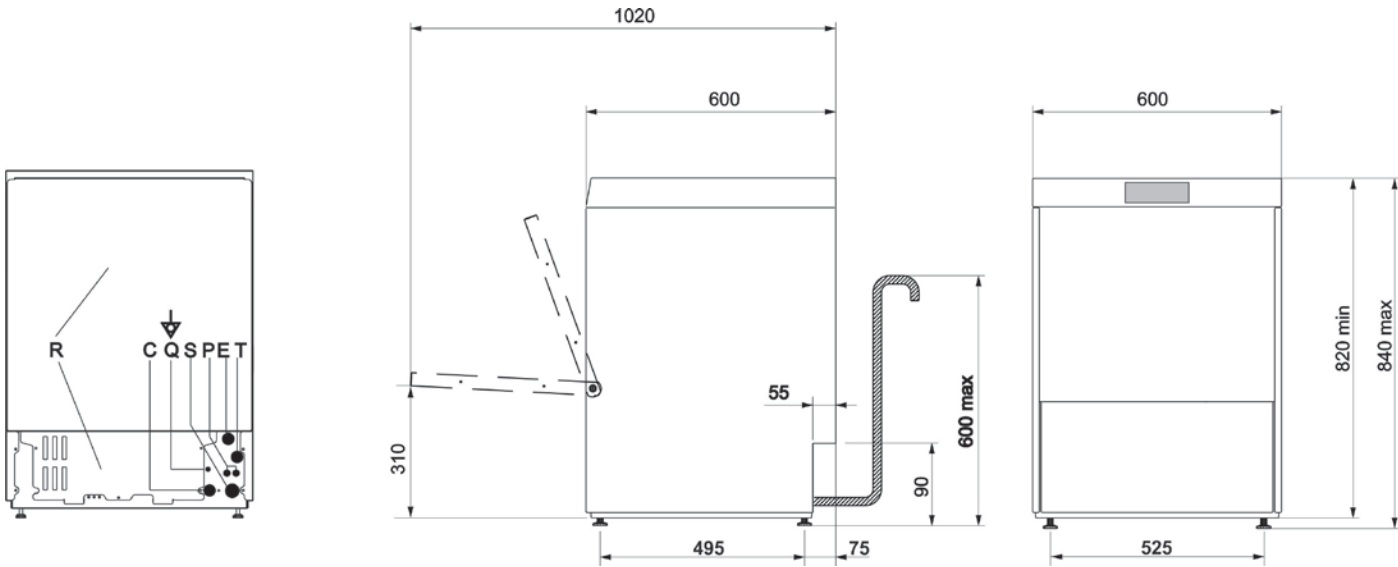
Glasswasher, 400x400 mm basket - **UG410/UG411 Series**



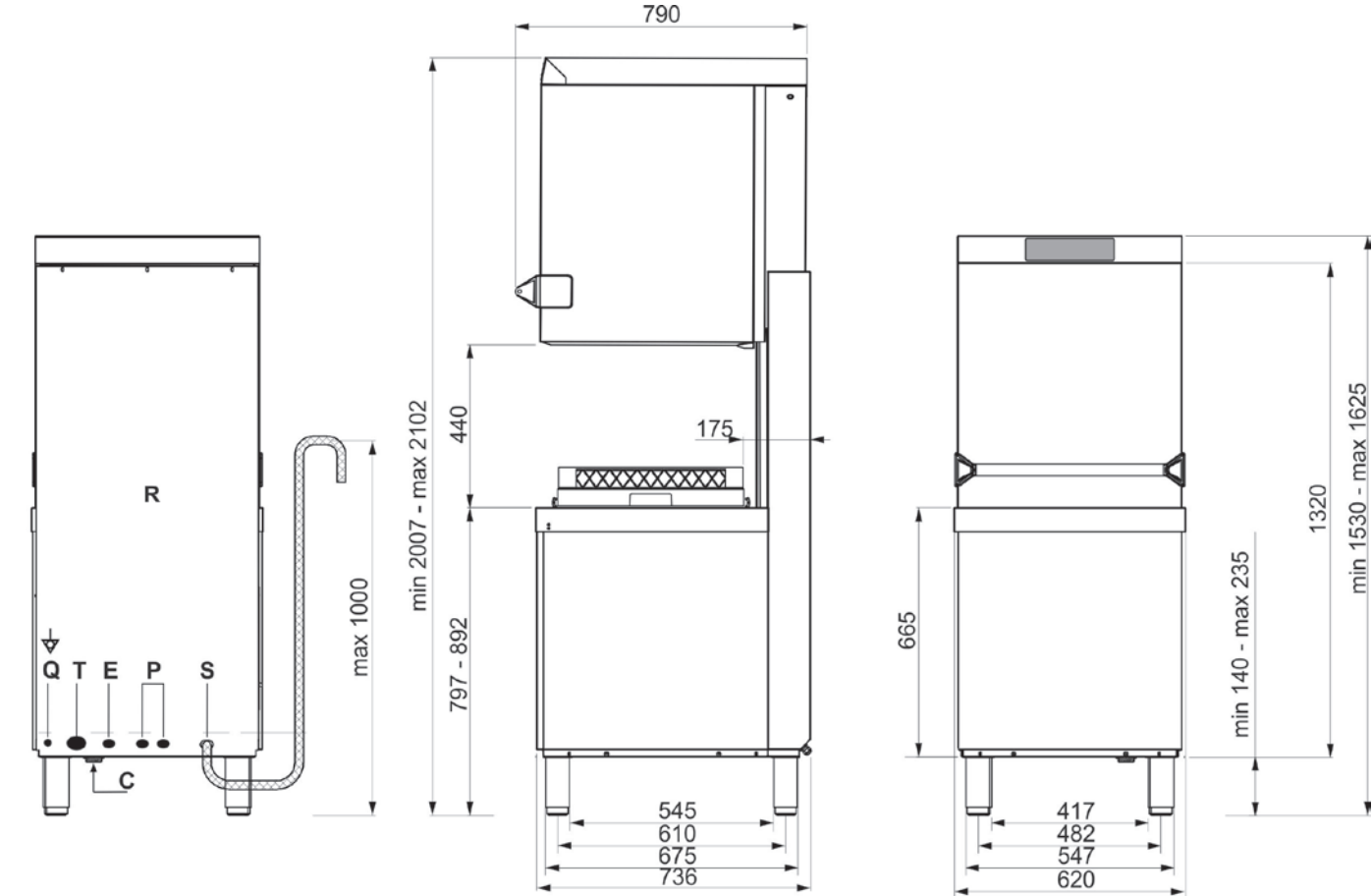
Raised dishwasher, 500x500 mm basket - **FD510/FD511 Series**



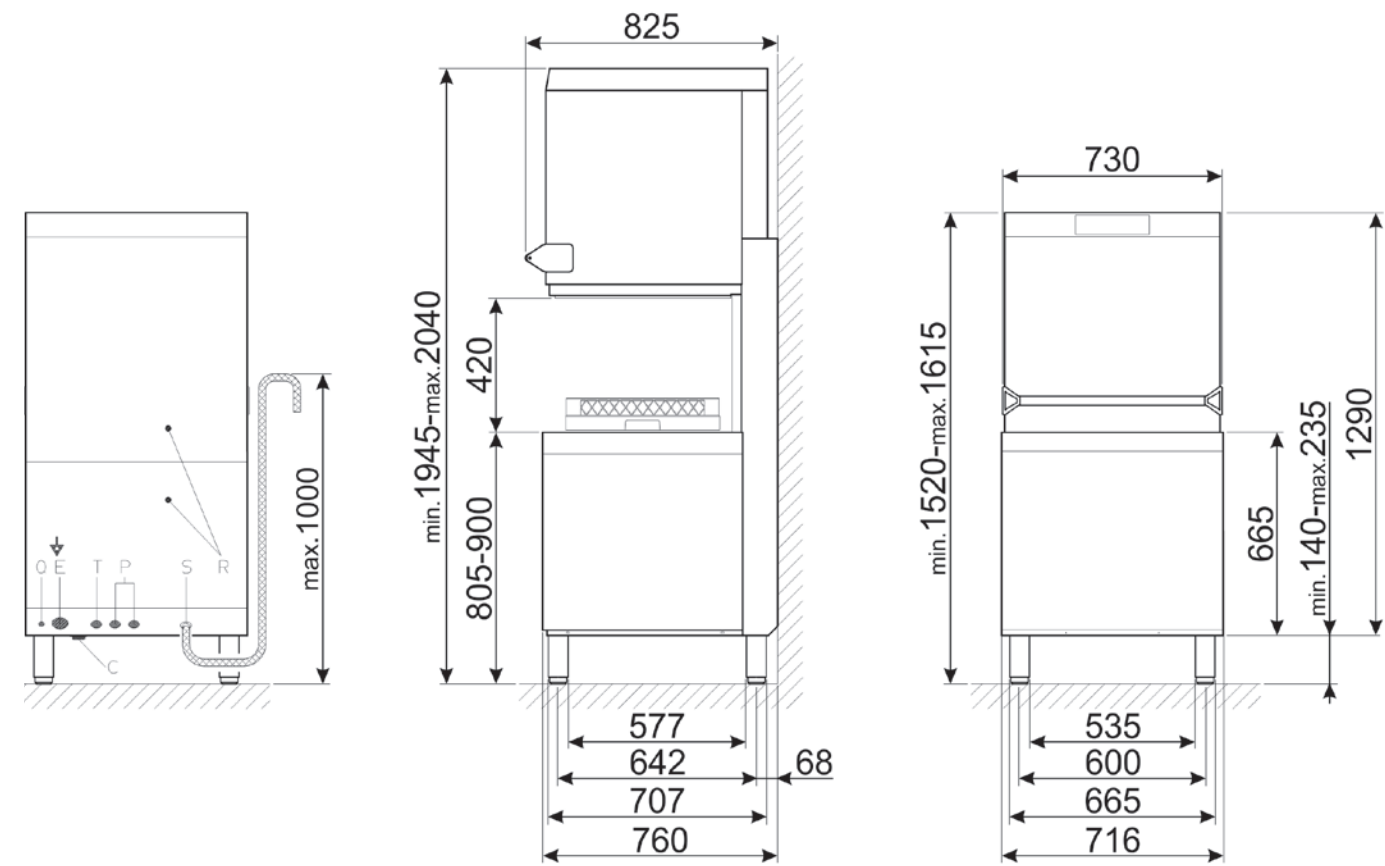
Dishwasher, 500x500 mm basket - **UD510/UD511 Series**



Hood-type dishwasher, 500x500 mm basket - **HTY510/HTY511 Series**



Hood-type dishwasher, 600x500 mm basket - **HTY615 Series**



CONNECTION WIRING DIAGRAM KEY

R	Rear lower panel	P	Peristaltic doser tubes
C	Water supply tubing	E	Electrical power cable
S	Water drain tubing	T	External doser power supply cable input
Q	Equipotential terminal		

SMEG IN THE WORLD

BRANCHES

Australia
SMEG AUSTRALIA PTY LTD
2-8 Baker Str.
Botany NSW 2019
E-mail: info@smeg.com.au

Belgium
N.V. SMEG BELGIUM S.A.
Schoonmansveld, 12
2870 Puurs
E-mail: info@smeg.be

Denmark
SMEG DANMARK
Amerika Plads 33
2100 København ø
E-mail: info@smeg.dk

Kazakhstan
SMEG KAZAKHSTAN
Raimbek Av./ Komunalnaya ul. 169/1
Almaty 050050
E-mail: info@smeg.kz

France
SMEG FRANCE
9, Rue Linus Carl Pauling - B.P. 548
76824 Mont Saint Aignan Cedex
E-mail: foodservice@smeg.fr

Germany
SMEG Deutschland GmbH
Erika-Mann-Straße Nr. 57 (Haus Nr. 5)
80636 München
E-mail: smeg@smeg.de

Great Britain
SMEG (UK) LTD
3A Park Square
Milton Park Abingdon
Oxon OX14 4RN
E-mail: foodservice@smeguk.com

Mexico
SMEG México S.A. de C.V.
Alvaro Obregon, 241
Col. Roma, Del. Cuauhtémoc
06700 Distrito Federal - México
E-mail: sacha@smeg.com.mx

The Netherlands
SMEG NEDERLAND BV
Veemkade, 384
Showroom
Withoedenveem, 12
1019 HE Amsterdam
E-mail: info@smeg.nl

Poland
Smeg Polska Sp. z o.o.
Ul. Cybernetyki 9,
02-677 Warszawa
E-mail: foodservice@smeg.pl

Portugal
SMEG PORTUGAL, Lda.
Rua Antonio Maria Cardoso n° 14
1200-027 Lisboa
e-mail: smeg@smeg.it

Russia
SMEG Russia OOO
Warshavskoe shosse, 1, building 1-2
c/o Business Center “W-Plaza”, office A615
117105, Moscow (Russian Federation)
E-mail: foodservice@smeg.ru

Spain
SMEG ESPAÑA, S.A.
c/Hidráulica, 4 - Pol.Ind. La Ferreria
08110 Montcada i Reixac (Barcelona)
E-mail: smeg@smeg.es

South Africa
SMEG SOUTH AFRICA (PTY) LTD.
24 Thora Crescent, Wynberg
Sandton, Johannesburg Gauteng
E-mail: info@smegsa.co.za

Sweden
SMEG SVERIGE AB
Dockplatsen 1
21119 Malmö
E-mail: info@smeg.se

Ukraine
SMEG UKRAINA LLC
Narodnogo Opolchennya St.1, Office 218
02081 Kiev
E-mail: info@smeg.ua

USA
SMEG USA, INC.
A & D BUILDING
150 E 58th Street - 7th Floor - Suite 0762
New York, NY 10155
E-mail: info@smegusa.com



SMEG S.p.A.

Via Leonardo da Vinci, 4 - 42016 Guastalla (RE) - Italy
tel +39 0522 82 11 fax +39 0522 82 14 53
www.smegfoodservice.com foodservice@smeg.it